

SCOTTSDALE AIRPARK SUBMARKET
SECOND FLOOR OFFICE SPACE FOR LEASE

15001 N HAYDEN ROAD • SCOTTSDALE, AZ 85260

**SUITE 207-210
±4,160 SF**



EXCLUSIVELY OFFERED BY



Randy Shell
Designated Broker
C 480.694.4100
randy@shellcommercial.com



Amanda Wright
Senior Associate
C 480.236.0037
amanda@shellcommercial.com



O 480 443 3992
www.shellcommercial.com
16410 N 91st Street | Suite 112
Scottsdale, AZ 85260

The above is subject to prior sales and leasing. This information has been secured from sources we believe to be reliable, but we make no representation or warranties, expressed or implied as to the accuracy of this information.

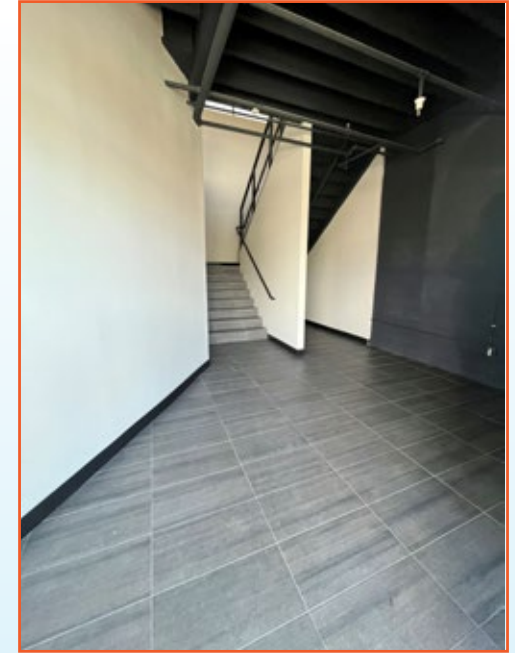
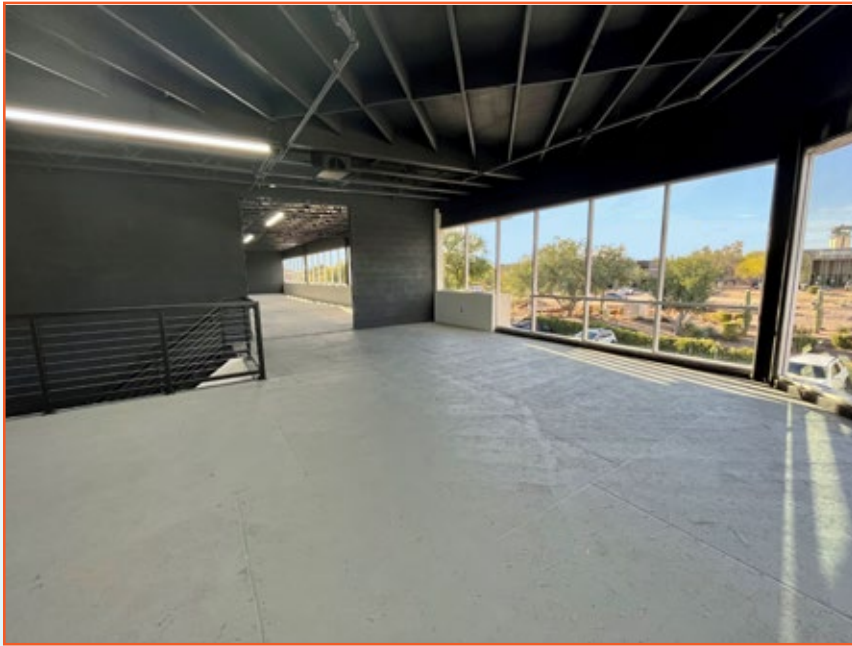
15001 N HAYDEN ROAD • SCOTTSDALE, AZ 85260

EXPANSIVE WINDOWS | SWEEPING VIEWS | FLEXIBLE OPEN FLOOR PLANS**Availability:** Suite 207 through 210: ±4,160 sf

- Features:**
- Independent second-floor office suite
 - Modern open floor plan with amazing views and ready for tenant finishes!
 - Private 1st floor lobby entrance
 - Two private finished restrooms
 - HVAC in place
 - Prime location on major intersection (Hayden/Raintree) with GREAT Hayden Road signage visibility
 - One (1) mile from Loop 101 Freeway access

Parking Ratio: • 2.45/1000 sf**Zoning:** • C-3 (Commercial), City of Scottsdale

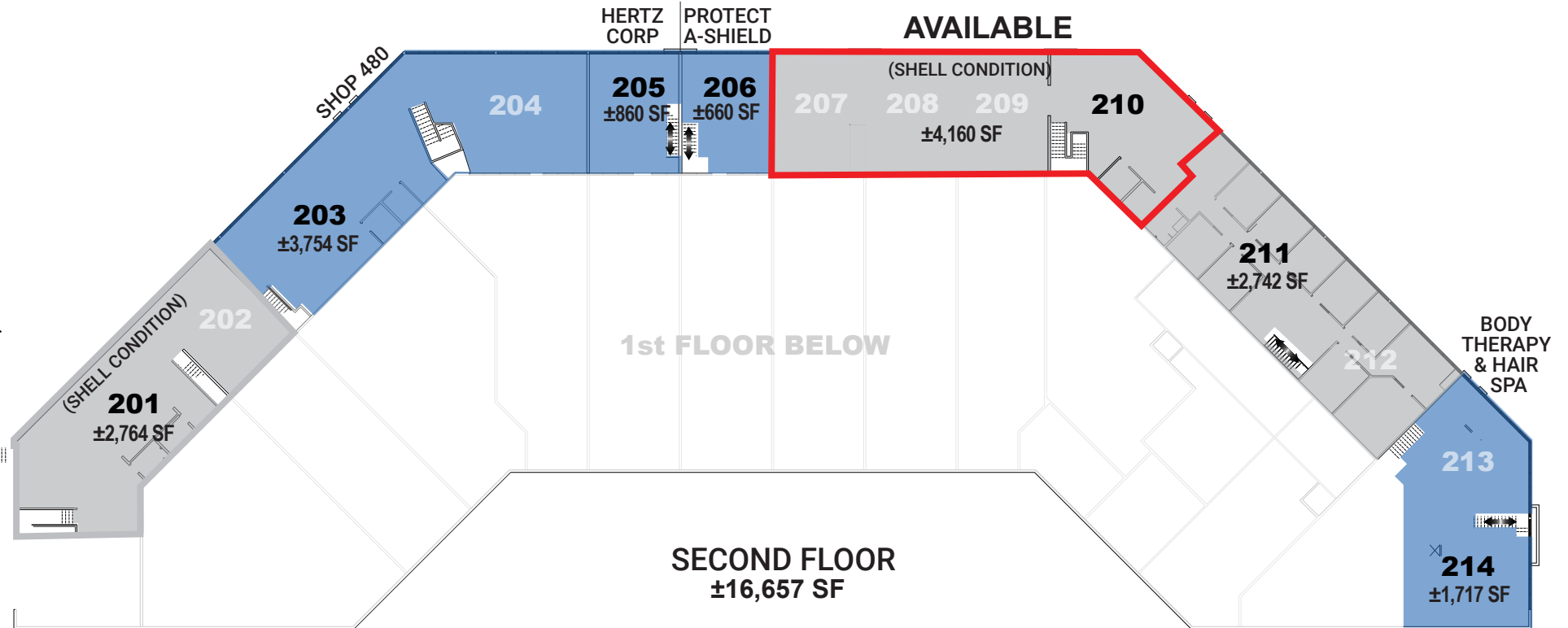
15001 N HAYDEN ROAD • SCOTTSDALE, AZ 85260



SUITE 207-210 ±4,160 sf



The above is subject to prior sales and leasing. This information has been secured from sources we believe to be reliable, but we make no representation or warranties, expressed or implied as to the accuracy of this information.



NOT TO SCALE

All information furnished regarding property for sale, rental or financing is from sources deemed reliable, but no warranty or representation is made to the accuracy thereof and same is submitted to errors, omissions, change of price, rental or other conditions, prior to sale, lease or financing or withdrawal without notice. No liability of any kind is to be imposed on the broker herein. This information has been secured from sources deemed reliable, however, we make no warranties as to its accuracy.

15001 N HAYDEN ROAD • SCOTTSDALE, AZ 85260

SUBJECT PROPERTY

TPC Scottsdale

THE PROMENADE SCOTTSDALE

SCOTTSDALE QUARTER

KIERLAND COMMONS

SCOTTSDALE TOWNE SQUARE

FRANK LLOYD WRIGHT BLVD

SCOTTSDALE AIRPORT

SCOTTSDALE RD

WESTWORLD OF SCOTTSDALE

TARGET

COSTCO WHOLESALE

THE HOME DEPOT